

Why Witmer? Because your project demands the best in concrete floor restoration services.

It's simple. Superior work, on time, on budget, while building sustainable and respecting relationships with our clients and employees. These qualities are the foundation of our reputation. Evidence is easy to find – our expertise comes from the variety of complex, significant, and diverse jobs we've been proud to deliver since 1967. We've set the standard in masonry and masonry-related services in the Mid-Atlantic States.

For fifty years, we've been building up people, along with buildings.

Over 200 men and women represent The Witmer Group family, from the master craftsmen to the master estimators, the most agile and responsive Superintendents and Project Managers to the wholly dedicated labor and talented supportive Staff. We're ready for any job.

Your project is our project – our success is yours.

We love what we do; it shows in all our work. We also take our craft very seriously, so with The Witmer Group, you benefit from the strictest of safety programs, the strongest record for on-time and on-budget completion, expansive bonding capacity and of course the highest standards in quality and craftsmanship. Whether you're an architect, engineer, facility manager, property manager, business owner, or general contractor, you're assured excellence with us.



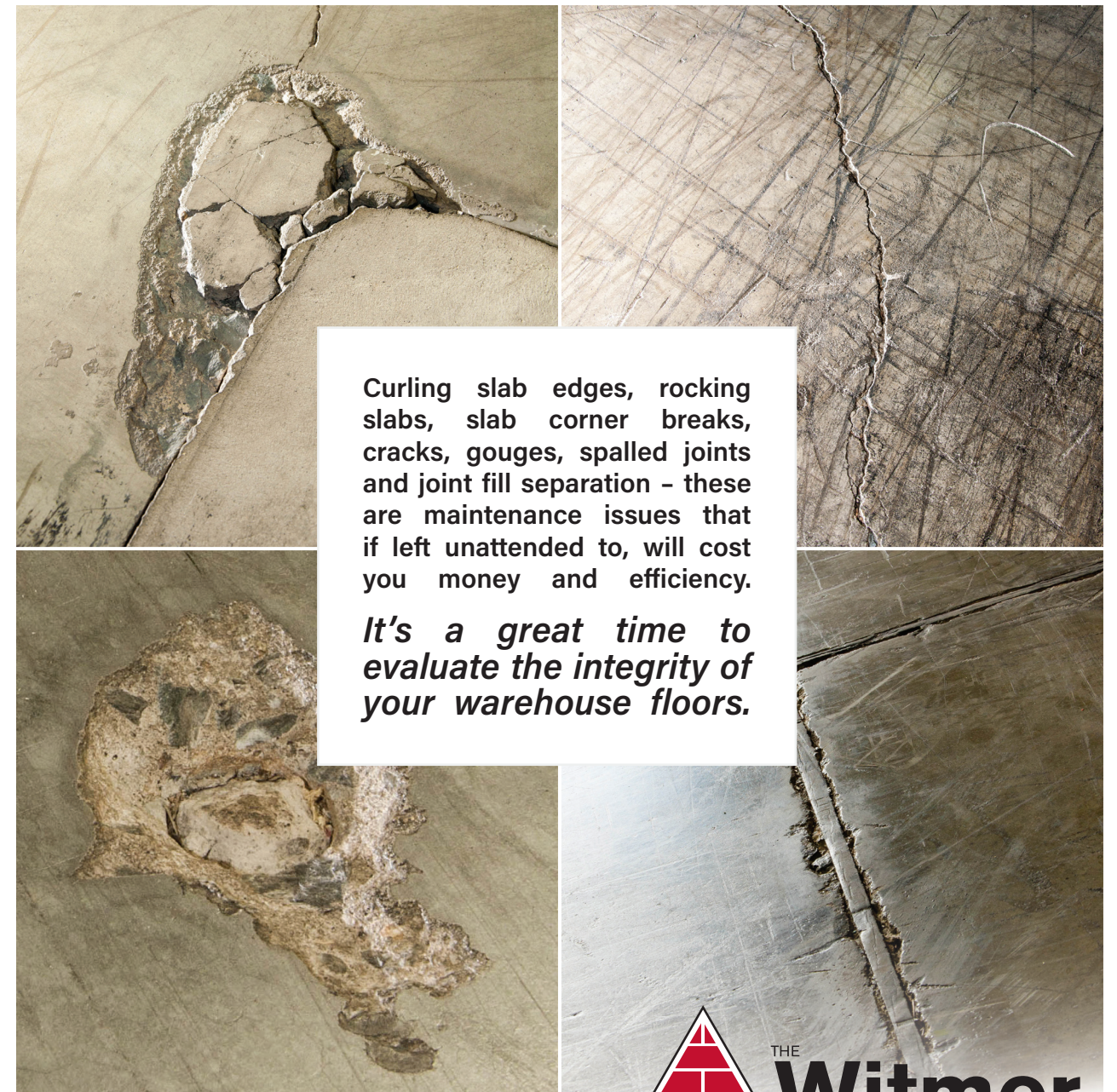
MASONRY • RESTORATION • WATERPROOFING • COATINGS

CONTACT US:

717.653.1428
info@thewitmergroup.com
www.thewitmergroup.com

Ready to restore your concrete floors?

The Witmer Group
offers concrete floor restoration services.



Curling slab edges, rocking slabs, slab corner breaks, cracks, gouges, spalled joints and joint fill separation – these are maintenance issues that if left unattended to, will cost you money and efficiency.

It's a great time to evaluate the integrity of your warehouse floors.



MASONRY • RESTORATION • WATERPROOFING • COATINGS



JUST IMAGINE IT SMOOTH AGAIN.

This kind of wear makes business less efficient, it causes the tires and wheels on your material handling vehicles costly damage, and perhaps most importantly, can create hazardous if not dangerous working conditions.



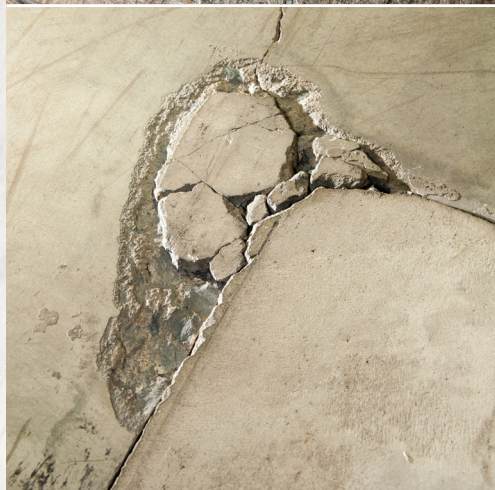
THE LONGER IT'S LEFT IN DISREPAIR, THE GREATER THE CONSEQUENCES.

With continued use, the separated fill will become more recessed, the spalling will spread outward from the joints, and the chips at the corners will grow.



THIS CRACK WILL GROW.

Cracks happen for a number of reasons. Although the repair can be straightforward, it's imperative to know why it happened before rectifying the problem as there may be an underlying cause requiring priority attention. Investigative services are worth the time; with The Witmer Group, we make investigation an essential first step.



WE LOVE A CHALLENGE.

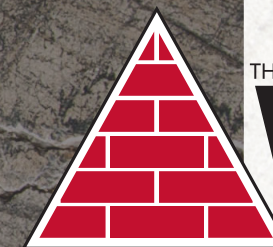
The Witmer Group offers comprehensive investigative and restoration services of your concrete floors. We help determine the causes of deterioration. We select only the most appropriate materials with which to make repairs. We properly prepare defect areas, and follow through with the techniques necessary to achieve the most durable floor repairs.

OUR PROCESS

(and your answers to achieving durable floor repairs)

- 1 Determine the cause of the deterioration:***
Low filler profile; poor joint cleaning prior to filling; the wrong filler; no filler; differing slab elevations (creating slab curl); rocking slab conditions (result of subgrade deficiencies or voids) - establishing cause is necessary to properly repair the defect.
- 2 Select the appropriate repair materials:***
Frequency of traffic, vehicle loading and vehicle types, building temperature, dry/cure time available, the width of the defect, and the structural condition of the floors all determine what materials are best to use. Choose the wrong material and the results will not be durable nor permanent.
- 3 Prepare the defect:***
Define the edges, and clean properly. The #1 cause of joint failure is inadequate preparation. Edges must be ground to a minimum of ½" deep vertically, thoroughly cleaned and dry to ensure long-term durability and structural stability of the repair.
- 4 Finished repair is flush with the floor:***
Without smooth and continuous transitions repairs will not last. We overfill slightly, allow the material to cure into a solid, then shave or grind flush the overfill. A concave or "dished" repair/filler profile leaves joint edges exposed as impact points, and thus subject to deterioration under hard-wheeled traffic.

**We're ready to restore
your concrete floors.**



THE
Witmer
Group

MASONRY • RESTORATION • WATERPROOFING • COATINGS